

RAD-IT Software Conversion Instructions

The Regional Architecture Development for Intelligent Transportation (RAD-IT) software is constantly evolving to accommodate new functionality and features for users to apply to ITS architecture analysis, development, maintenance, and application. ITS architectures developed with earlier versions of RAD-IT will require conversion to support architecture tailoring using the latest version of RAD-IT. RAD-IT software uses Microsoft Access to tailor the ITS architecture through multiple database queries and tables. Conversion is necessary to enable the new RAD-IT version features.

The following describes the conversion process and provides instructions on architecture conversion to a new RAD-IT software version. The process requires a few interactions with the user to execute.

After downloading the latest version of the RAD-IT software from the National ITS Architecture website at www.arc-it.net, follow the steps below to convert an ITS architecture:

1. Open the RAD-IT software.
2. Select the File tab in the upper left corner of the RAD-IT window.
3. Select Open from the drop-down menu.
4. Navigate the file directory to the ITS architecture file to be converted.
5. Double click on the ITS architecture file to be converted.
6. The Convert/Open File dialog box will be displayed. There are 2 options presented: Convert File or Open File. To fully use the RAD-IT software to tailor the ITS architecture and save the results, the architecture file must be converted. Select the Convert File option in the dialog box and select OK in the lower right corner as illustrated in Figure 1.

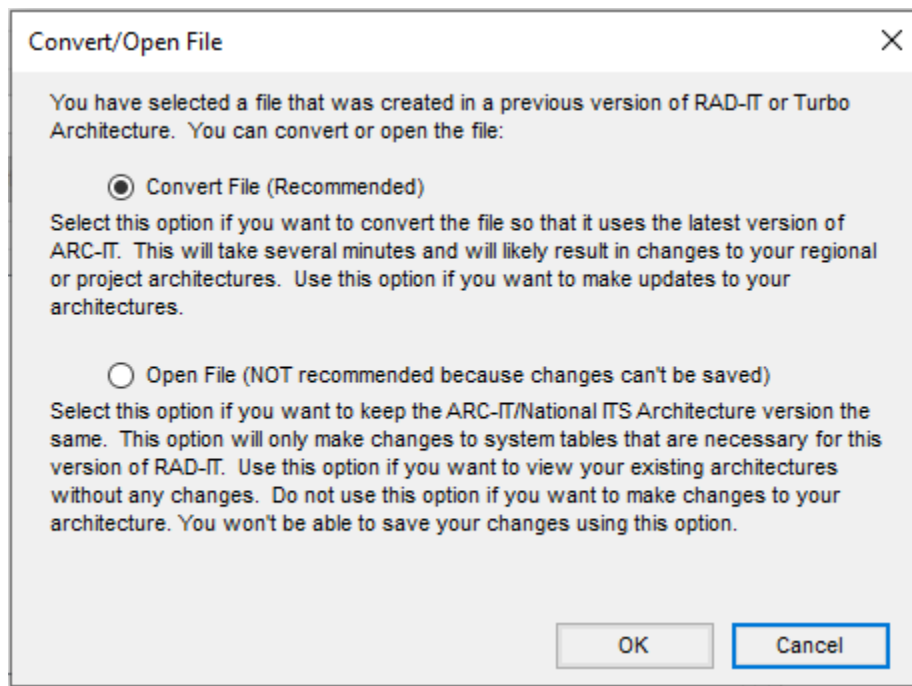


Figure 1 RAD-IT Convert/Open File Dialog

RAD-IT Software Conversion Instructions

As illustrated in Figure 1, Open File is also an option but it is not recommended. Open File allows the ITS architecture file to be opened in RAD-IT but no changes can be saved. It may be useful if viewing the existing architecture content is all that is needed.

7. The next dialog box will prompt for a folder and file name under which to save the converted RAD-IT file. It is recommended to maintain the naming convention for the architecture files with the addition of the user's name or organization to distinguish the attribution of the file for future sharing and information exchange. For the Florida ITS Architectures, the architecture file naming convention is D# RITSA yyyy-mm-dd Axx Maint Update.radit, where:
 - a. D# = District (D1, D2, D3, D46, D5, D7, FTE); replace D# RITSA with SITSA for statewide
 - b. yyyy-mm-dd = Date (year-month-day)
 - c. Axx = ARC-IT or RAD-IT Version (A90 = Version 9.0; A911 = Version 9.1.1, etc)
8. After the folder and file name have been selected, the RAD-IT software will initiate conversion of the RAD-IT file. A dialog box as illustrated in Figure 2, will be displayed and green checkmarks will appear beside each conversion activity as it progresses. The user will be prompted with a yes or no option regarding Conversion Tables which are produced as part of the conversion process. The Conversion Tables provide information about changes that were made to the ITS architecture content as a result of the conversion process. If the RAD-IT update was driven by ARC-IT changes, there may be related revisions to physical objects, functional objects, services, etc. that would be useful to know. It is recommended to select "Yes" to view and save the Conversion Tables for future reference as they cannot be produced after conversion is complete.

After the View Conversion Tables option, the final option is to determine if Discontinued Components should be removed from the ITS architecture. Discontinued components could be physical objects, functional objects, or information flows that are no longer part of the converted ITS architecture as a result of conversion changes. Keeping or removing these components poses not detrimental harm to the RAD-IT file. Keeping components makes them available but clutters the architecture content. Removing components declutters the architecture but the components are no longer available. The general recommendation is to remove the discontinued components.

RAD-IT Software Conversion Instructions

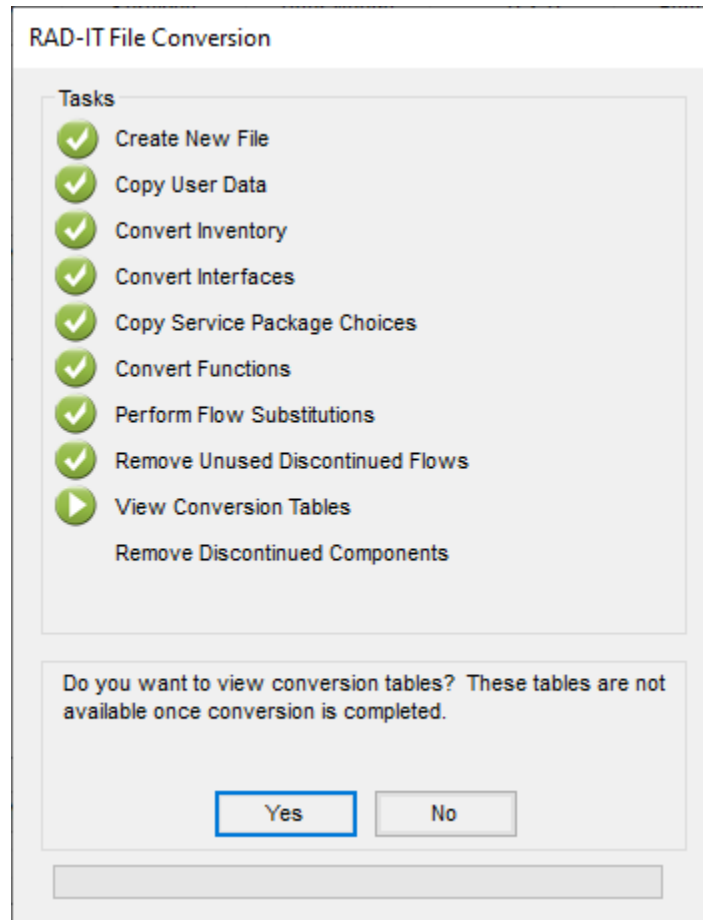


Figure 2 RAD-IT File Conversion Dialog

9. At the completion of the conversion process, a statement informs the user to “Do a build to add all flows to the interfaces tab” as illustrated in Figure 3. It is not necessary to add all flows to the interfaces tab to view the ITS architecture content in its pre-conversion state. At this point, the ITS architecture content is ready to be explored within the new version of RAD-IT.

RAD-IT Software Conversion Instructions

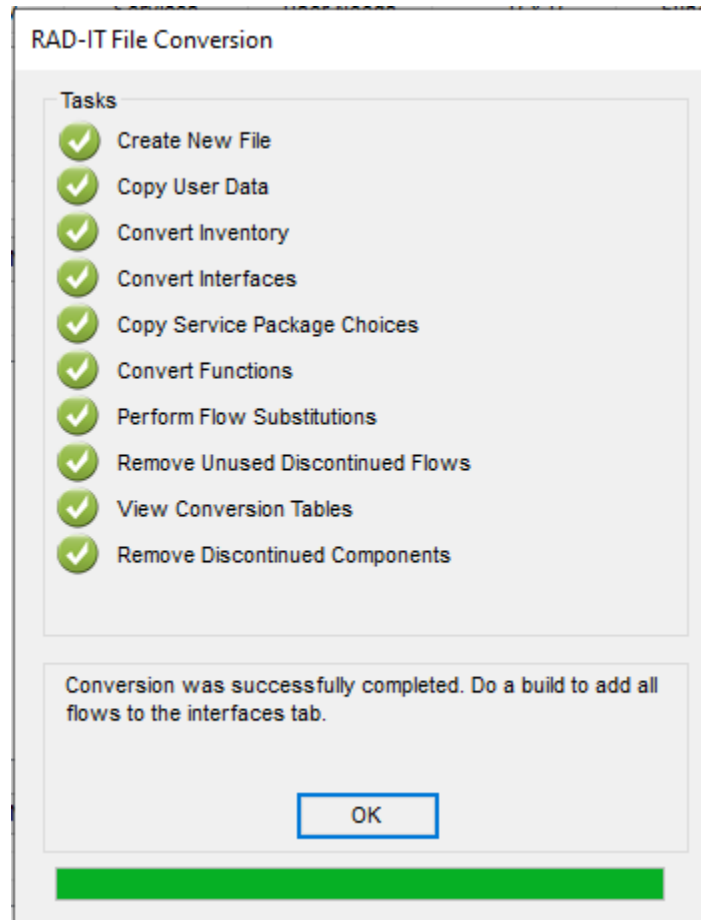


Figure 3 Final RAD-IT File Conversion Dialog